

PROPOSED SUBDIVISION
PROPOSED LOTS 251-260, 384-292 & 311-371
CANCELLING LOT 2 ON RP185250, 1001 ON SP295609, 1002 ON SP 298950 & 19 ON RP79384

No OF LOTS:- 80

SPECIFICATIONS
THIS WORKS PLAN IS TO BE READ IN CONJUNCTION WITH THE FOLLOWING NBN Co. MANUAL AND SPECIFICATIONS:
* NBN Co. GUIDELINES FOR DEVELOPERS: NBN-TE-CTO-194 V7.0

ORIGIN: NEW RESIDENTIAL SUBDIVISION
NOTES:
1. P100 TO BE INSTALLED UP TO BUT NOT CONNECTED INTO THE EXISTING INFRASTRUCTURE AT STN 3 & 29.
2. INTERCONNECTION BETWEEN PROPOSED NBN CO. NETWORK AND THE EXISTING NETWORK TO BE ORGANISED AND CARRIED OUT BY NBN CO.
3. P100 TO BE INSTALLED TO BOUNDARY OF DEVELOPMENT AND CAPPED FOR FUTURE STAGE EXTENSION.
4. INSTALL LEAD IN PIPE FOR FUTURE STAGE.

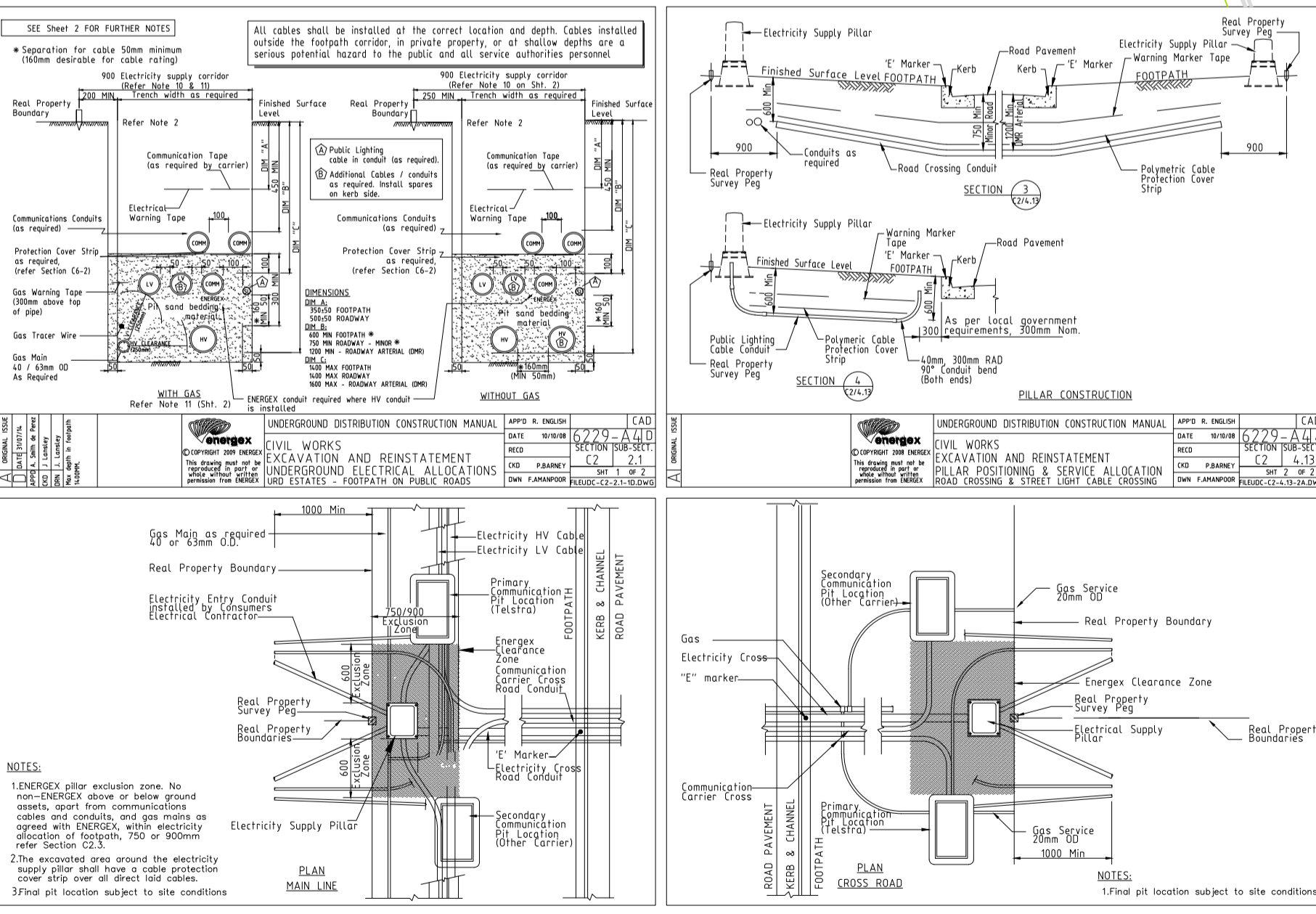
TARGET DATES
MATERIALS REQ'D - SEPTEMBER 2018
INSTALLATION REQ'D - OCTOBER 2018

ON SITE SERVICE CHECKS
ON SITE CHECKS OF EXISTING SERVICES SHOULD BE ARRANGED WITH THE RELEVANT AUTHORITIES LISTED BELOW.
COUNCIL - DIAL BEFORE YOU DIG - 1100
DIAL BEFORE YOU DIG - 1100
NBN - WORKS CO-ORDINATOR - JOHN CROWLEY - 0408 469 685
J&P RICHARDSON - (CONSTRUCTION) - PETER HARLEY - 3271 2911
- (DESIGNER) - BYRON HEMPHILL - 3271 2911
CIVIL CONSULTANT - RMA ENGINEERS - KYLE MARTIN - 3361 9319
SURVEYOR - DTS - BRIAN WHITE - 3118 0600
GAS - APA GROUP - SILVIA HART - 3215 6655

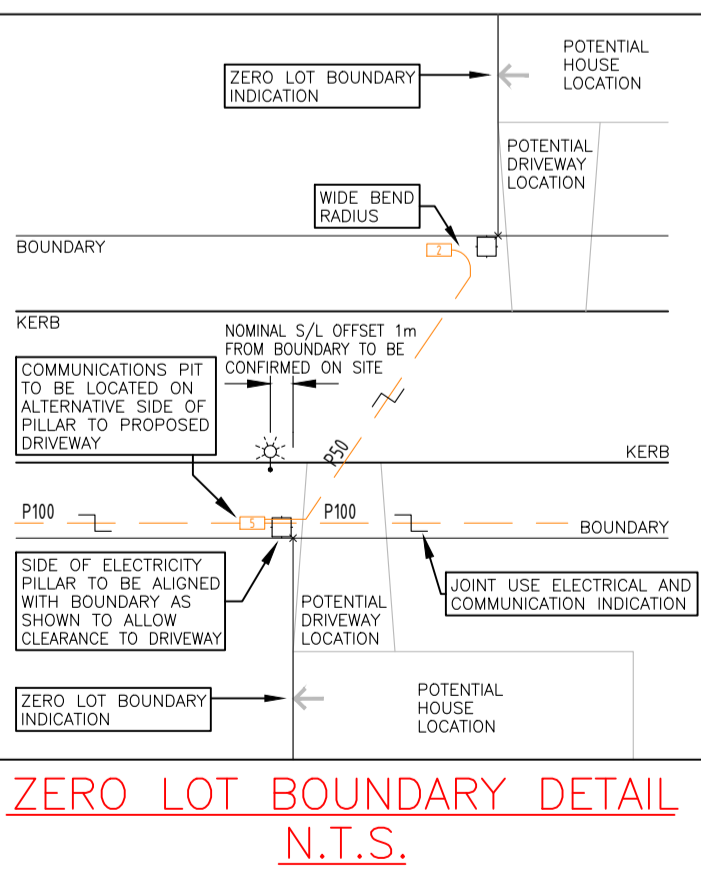
LEGEND
--- WATER X-ING
--- RETAINING WALL
--- EASEMENT
↑ ZERO LOT BOUNDARY
--- JOINT USE INDICATOR

WARNING: CIVIL CONTRACTOR
CHECK COMMUNICATIONS CONDUITS AND PITS ARE INSTALLED PRIOR TO CONSTRUCTING ANY RETAINING WALLS, PATHS, DRIVEWAYS AND WATER SERVICES

WARNING
RETICULATED GAS WILL BE INSTALLED IN A "JOINT-USE" TRENCH WITH ELECTRICAL, WHERE ACCEPTABLE TO ENERGEX. IN ALL OTHER AREAS, INCLUDING ROAD CROSSINGS, GAS WILL BE INSTALLED ON THE GAS AUTHORITIES OWN ALIGNMENT. PLEASE CONTACT THE RELEVANT GAS PERSONNEL FOR CONFIRMATION OF ALIGNMENT PRIOR TO COMMENCING SITE WORKS.



NBN CO. PIT REQUIREMENTS (mm)						TELSTRA PIT REQUIREMENTS (mm)					
DISCRIPTION	NBN CO. MIN	NBN CO. MIN	NBN CO. MIN	DISCRIPTION	TELSTRA MIN	TELSTRA MIN	TELSTRA MIN	DISCRIPTION	TELSTRA MIN	TELSTRA MIN	TELSTRA MIN
SERVICE DROP ACCESS PIT	C2	(665)	(285)	(585)	P5	710	455	635			
LOCAL NETWORK PIT - BOUNDARY PIT	C5	(705)	(450)	(660)	P6	1370	550	680			
DISTRIBUTION / LOCAL NETWORK CONNECTION PIT	C8	(1360)	(555)	(860)	P8	1370	550	910			
FIBRE DISTRIBUTION PIT	C9	(2000)	(555)	(900)	P9	2040	550	900			
					CONC J8	1380	560	910			
					CONC J9	2030	560	910			



WARNING
POSSIBLE LIVE UNDERGROUND ELECTRICAL CABLES ON THIS WORK SITE.

AS CONSTRUCTED

SOURCE DOCUMENTS			
AUTHOR	DRG. No.	REV. No.	DATE
RMA ENGINEERS	RMA ELECTRICAL PACKAGE INFO.ZIP	-	15-05-18
-	-	-	-
-	-	-	-
-	-	-	-
-	-	-	-
-	-	-	-



REV	DATE	DRAFTER	DESCRIPTION	APPROVED
B	17-12-18	P.H./I.T.J.	AS CONSTRUCTED	
A	09-11-18	S.H./I.T.J.	ISSUED FOR CONSTRUCTION	
-	24-05-18	B.HEMPHILL	ORIGINAL ISSUE	

STRICTLY CONFIDENTIAL

NBNCO APPROVAL RECORD:

SIGNATURE _____ DATE _____

DD _____

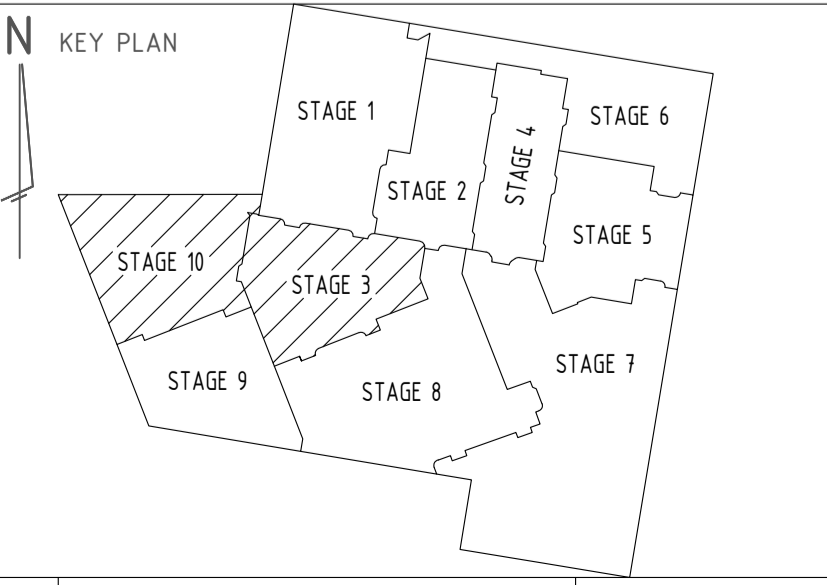
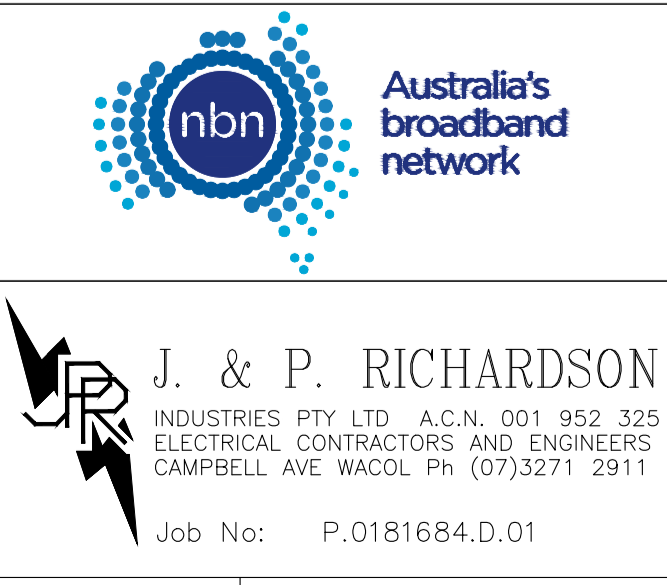
WD _____

AB _____

QUALITY RECORD :

NBNCO DISCLAIMER

THIS DOCUMENT HAS BEEN PREPARED SOLELY FOR THE USE OF NBNCO LIMITED (ABN 86 136 533 741) FOR USE IN MAINTAINING NBNCO FACILITIES. IT HAS NOT BEEN CREATED FOR ANY OTHER USE. IT SHOULD NOT BE SCALED TO LOCATE NBNCO ASSETS. NO WARRANTY IS GIVEN THAT THE INFORMATION IS ACCURATE OR COMPLETE.



DRAWING TITLE:			
NBN Co. PIT & PIPE INFRASTRUCTURE TO PROPOSED SUBDIVISION AMITY ESTATE STAGES 3 & 10 NARANGBA			
STATE:	QLD	REGION:	
FSA:		SAM:	ADA:
PROJECT No:	AYCA-5F0FH		
CADREF No:	E18-P.0181684.D.01N		
SCALE	1:500 @ A1	SHEET No.	2 OF 3
REV.	B		

[illegible]