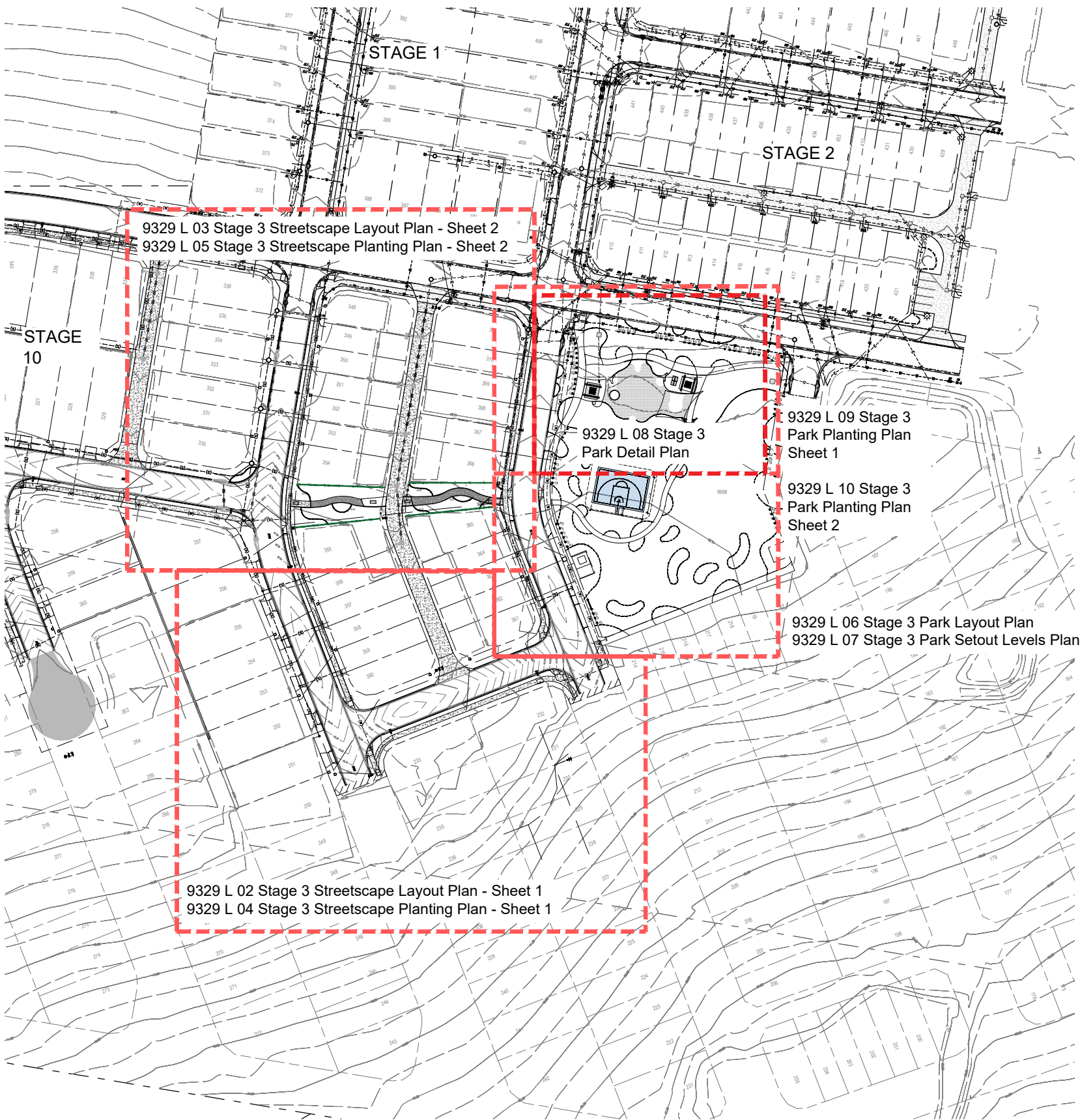


Burpengary Road (Amity - Stages 3) - Landscape Works Plans

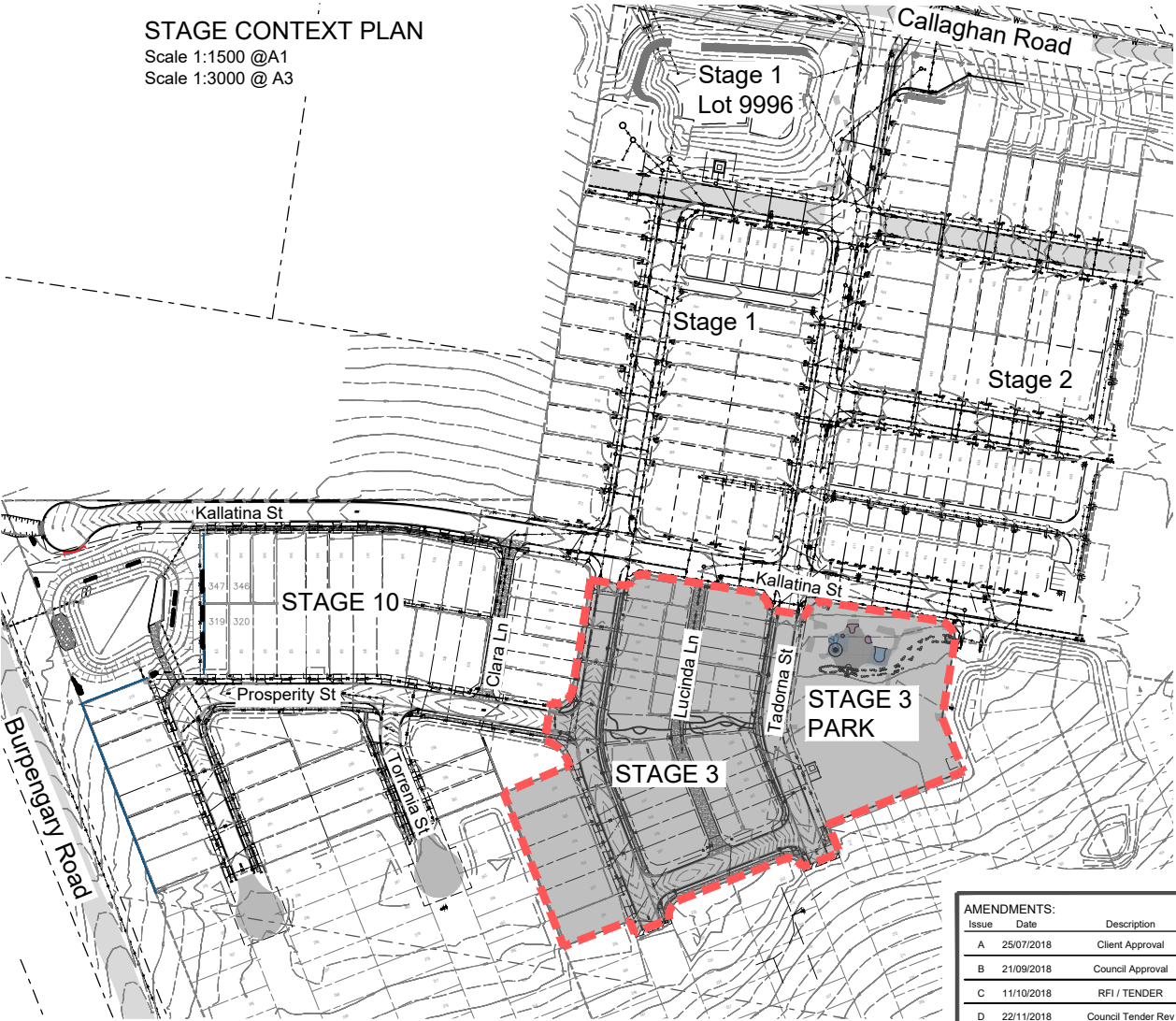
ISSUE D 22/11/2018
COUNCIL TENDER REV
ISSUE

landscape architecture



SHEET LAYOUT PLAN
Scale 1:750 @A1
Scale 1:1500 @ A3

STAGE CONTEXT PLAN
Scale 1:1500 @A1
Scale 1:3000 @ A3



DRAWING SCHEDULE

Dwg No.	Drawing Title	Issue	Date
9329 L 01	Cover Sheet	D	22/11/2018
9329 L 02	Stage 3 Streetscape Layout Plan - Sheet 1	D	22/11/2018
9329 L 03	Stage 3 Streetscape Layout Plan - Sheet 2	D	22/11/2018
9329 L 04	Stage 3 Streetscape Planting Plan - Sheet 1	D	22/11/2018
9329 L 05	Stage 3 Streetscape Planting Plan - Sheet 2	D	22/11/2018
9329 L 06	Stage 3 Park Layout Plan	D	22/11/2018
9329 L 07	Stage 3 Park Setout and Levels Plan	D	22/11/2018
9329 L 08	Stage 3 Park Detail Plan - Sheet 1	D	22/11/2018
9329 L 09	Stage 3 Park Planting Plan - Sheet 1	D	22/11/2018
9329 L 10	Stage 3 Park Planting Plan - Sheet 2	D	22/11/2018
9329 L 11	Stage 3 Landscape Construction Details - Sheet 1	D	22/11/2018
9329 L 12	Stage 3 Landscape Construction Details - Sheet 2	D	22/11/2018
9329 L 13	Stage 3 Landscape Construction Details - Sheet 3	D	22/11/2018

AMENDMENTS:			
Issue	Date	Description	Checked
A	25/07/2018	Client Approval	GC
B	21/09/2018	Council Approval	GC
C	11/10/2018	RFI / TENDER	GC
D	22/11/2018	Council Tender Rev	GC



**saunders
havill
group**
Saunders Havill Group Pty Ltd ABN 24 144 972 949
Brisbane • Emerald • Gladstone
head office 9 Thompson St Bowen Hills Q 4006
phone 1800 123 SHG web www.saundershavill.com
surveying • town planning • urban design • environmental management • landscape architecture



40
YEARS
1975 - 2015



DISCLAIMER:
Designs documented on this drawing are the property of Saunders Havill Group PTY LTD and are not authorised for reproduction or use in whole or part without written permission.
These plans have been prepared for the exclusive use of the client. Saunders Havill Group do not accept responsibility for any use of or reliance upon the contents of these drawings by any third party. Confirm all dimensions on site and clarify any discrepancies prior to construction.

CLIENT: DAHUA POINTCORP
NARANGBA PTY LTD

PROJECT: Amity
Stages 3

DRAWING: Cover Sheet

SCALE: AS NOTED

DATE: September 18

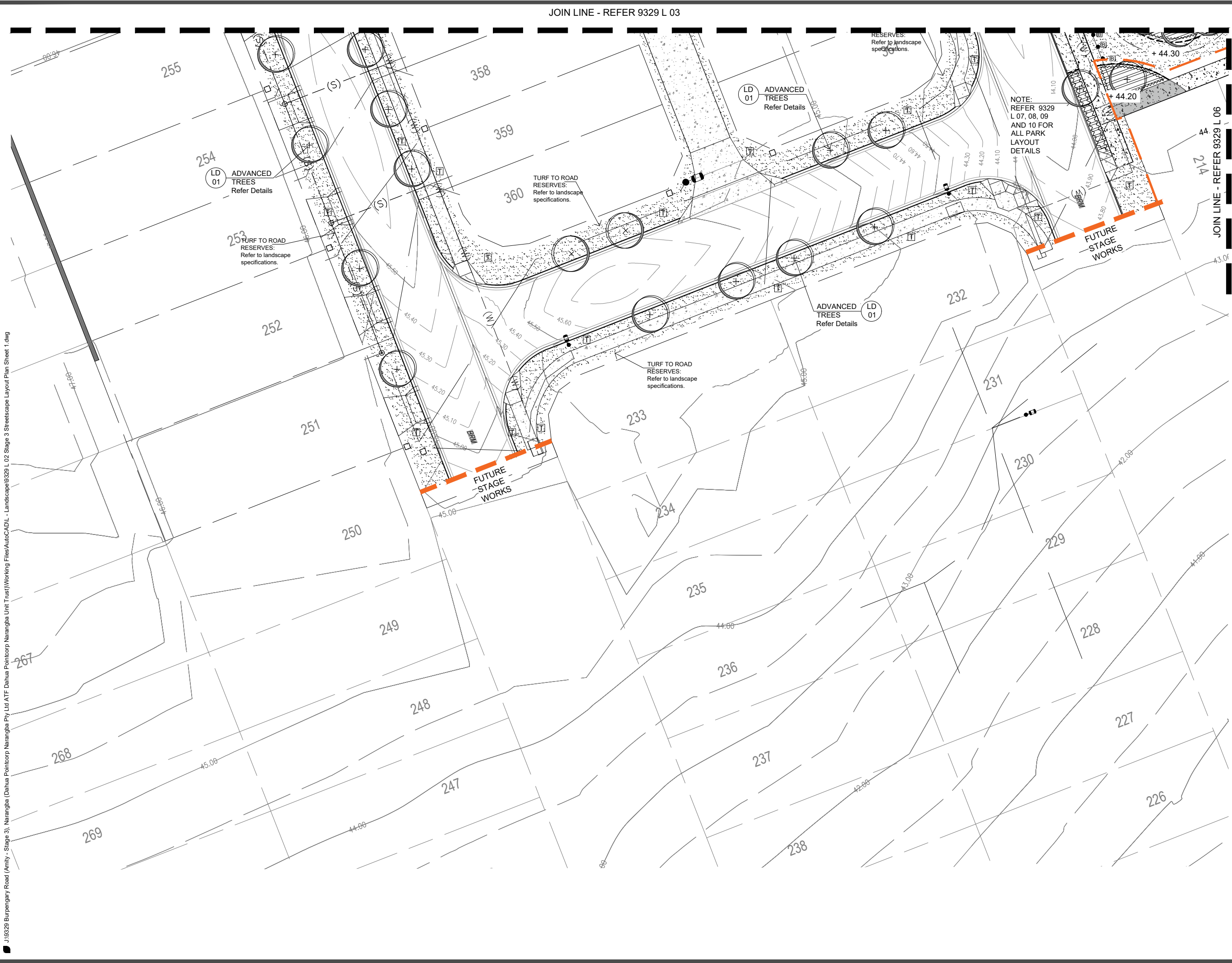
CHECKED: GC

PROJECT No: 9329

DRAWN: FS

DRAWING No: 9329 L 01 D

J:\9329 Burpengary Road (Amity - Stage 3) Narangba (Dahua Pointcorp Narangba Pty Ltd ATF Dahua Pointcorp Narangba Unit Trust)\Working Files\AutoCAD\L - Landscape\9329 L 02 Stage 3 Streetscape Layout Plan Sheet 1.dwg



LEGEND: to be read in conjunction with accompanying SHG & MBRC Detail Drawings, Specifications and Schedules that form part of the detailed landscape documentation set.

- PROPOSED TREE LOCATIONS: Refer to Planting Plan & Schedule
- GROUND COVER, FEATURE PLANT & SHRUBS: Refer Plan & Schedule
- MULCHED PLANTING AREA: Mulch, Topsoil and Cultivation.
- COIR-MATTED PLANTING AREA: Matting, Topsoil and Cultivation.
- SPADE CUT EDGING: Maintain between grass & planting.
- PLAYGROUND CONCRETE EDGING: Flush edge between Softfall & Planting.
- TURFED AREA: A Grade Green Couch, Topsoil and Cultivation
- BROOM FINISHED CONCRETE: Plain Concrete paths Refer Specifications and Details
- PAVING TYPE 1: Broom Finished Coloured Concrete Refer Specifications and Details
- PAVING TYPE 2: Exposed Aggregate Finished Coloured Refer Specifications and Details
- TIMBER BOLLARDS: 1.5M Centres Typically - Refer to Details

- REMOVABLE BOLLARDS: Refer to Details
- MULCH SOFTFALL: Organic Playground Mulch - Refer Specifications and Details
- RUBBER SOFTFALL: Playground Softfall - Refer Specifications and Details
- LIGHT POLE INDICATIVE LOCATION: Refer Elec. Eng. Confirm tree setbacks a pre-start meeting prior to excavation.

NOTES:
Key service locations are shown where available to assist with site works. For complete details of service information refer to full Engineer's drawing sets and confirm all locations on site prior to excavation. No excavations to take place without approval of the Site Superintendent.

Any proposed adjustments to the landscape plan required based on site conditions and services clashes are to be confirmed with the Landscape Architect prior to construction.

AMENDMENTS:

Issue	Date	Description	Checked
A	25/07/2018	Client Approval	GC
B	21/09/2018	Council Approval	GC
C	11/10/2018	RFI / TENDER	GC
D	22/11/2018	Council Tender Rev	GC

saunders havill group 40 YEARS
Saunders Havill Group Pty Ltd ABN 24 144 972 949
Brisbane • Emerald • Gladstone
head office 9 Thompson St Bowen Hills Q 4006
phone 1800 123 SHG web: www.saundershavill.com
surveying • town planning • urban design • environmental management • landscape architecture

APPROVED COMPANY
ISO 9001 Quality Management Systems
ISO 14001 Environmental Management Systems
QMS Certification

DISCLAIMER:
Designs documented on this drawing are the property of Saunders Havill Group PTY LTD and are not authorised for reproduction or use in whole or part without written permission.
These plans have been prepared for the exclusive use of the client. Saunders Havill Group do not accept responsibility for any use of or reliance upon the contents of these drawings by any third party. Confirm all dimensions on site and clarify any discrepancies prior to construction.

CLIENT: DAHUA POINTCORP NARANGBA PTY LTD

PROJECT: Amity Stages 3

DRAWING: Streetscape Layout Plan - Sheet 1

SCALE: 1:200@A1 0 2 4 10m
1:400@A3

DATE: July 18 CHECKED: GC

PROJECT No: 9329 DRAWN: FS

DRAWING No: 9329 L 02 D

J:\9329 Burpengary Road (Amity) - Stage 3, Narangba (Dahua Pointcorp Narangba Pty Ltd ATF Dahua Pointcorp Narangba Unit Trust)\Working Files\AutoCAD\ - Landscape\9329 L 03 Stage 3 Streetscape Layout Plan Sheet 2.dwg



landscape architecture

LEGEND: to be read in conjunction with accompanying SHG & MBRC Detail Drawings. Specifications and Schedules that form part of the detailed landscape documentation set.

PROPOSED TREE LOCATIONS:
Refer to Planting Plan & Schedule

GROUNDCOVER, FEATURE PLANT & SHRUBS:
Refer Plan & Schedule

MULCHED PLANTING AREA:
Mulch, Topsoil and Cultivation.

COIR-MATTED PLANTING AREA:
Matting, Topsoil and Cultivation.

SPADE CUT EDGING:
Maintain between grass & planting.

PLAYGROUND CONCRETE EDGING:
Flush edge between Softfall & Planting.

TURFED AREA: A Grade Green Couch,
Topsoil and Cultivation

BROOM FINISHED CONCRETE:
Plain Concrete paths
Refer Specifications and Details

PAVING TYPE 1:
Broom Finished Coloured Concrete
Refer Specifications and Details

PAVING TYPE 2:
Exposed Aggregate Finished Coloured
Refer Specifications and Details

TIMBER BOLLARDS: 1.5M Centres
Typically - Refer to Details

REMOVABLE BOLLARDS:
Refer to Details

MULCH SOFTFALL:
Organic Playground Mulch - Refer
Specifications and Details

RUBBER SOFTFALL:
Playground Softfall - Refer
Specifications and Details

LIGHT POLE INDICATIVE LOCATION:
Refer Elec. Eng. Confirm tree setbacks a
pre-start meeting prior to excavation.

NOTES:
Key service locations are shown where available to assist with site works. For complete details of service information refer to full Engineer's drawing sets and confirm all locations on site prior to excavation. No excavations to take place without approval of the Site Superintendent.

Any proposed adjustments to the landscape plan required based on site conditions and services clashes are to be confirmed with the Landscape Architect prior to construction.**AMENDMENTS:**

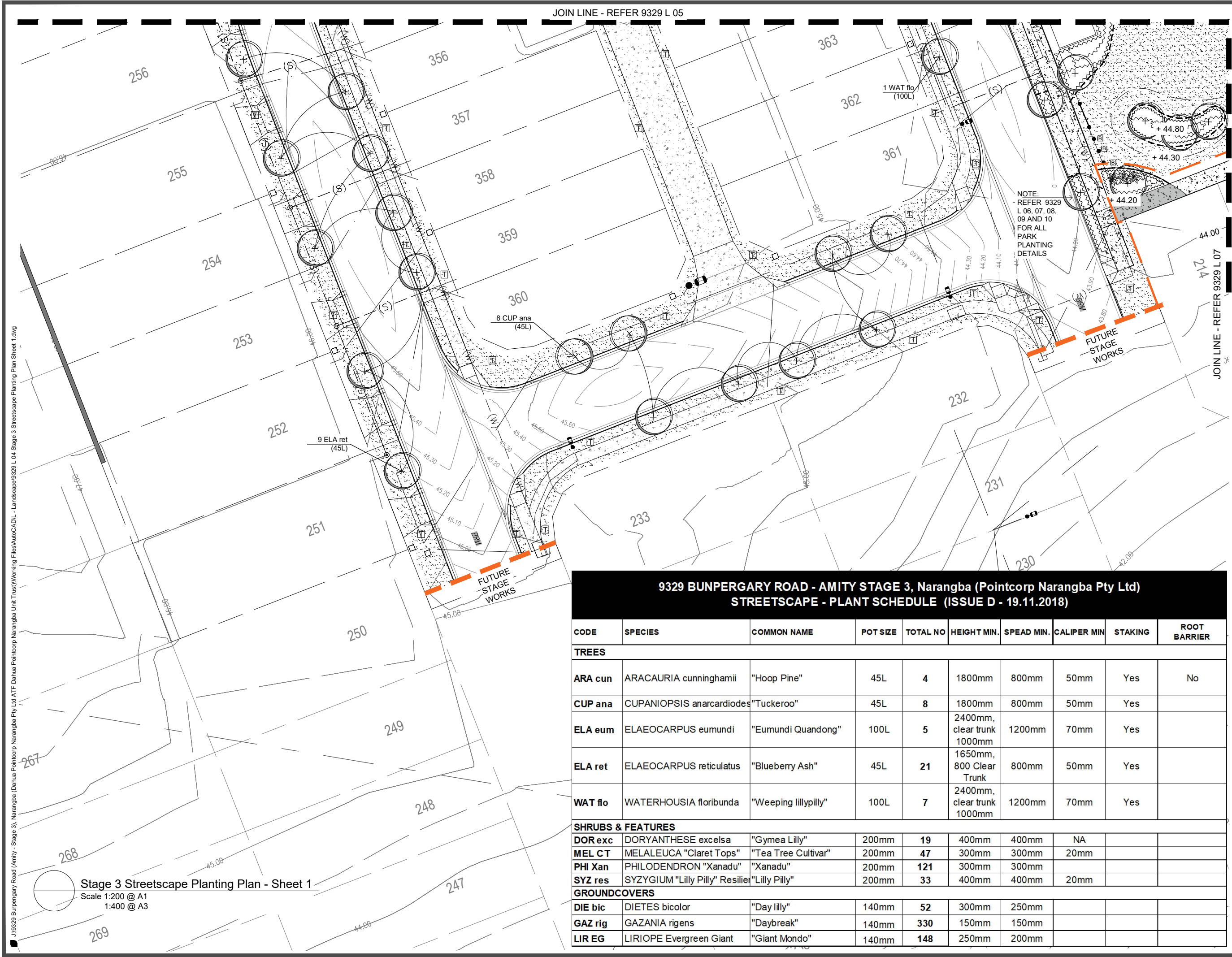
Issue	Date	Description	Checked
A	25/07/2018	Client Approval	GC
B	21/09/2018	Council Approval	GC
C	11/10/2018	RFI / TENDER	GC
D	22/11/2018	Council Tender Rev	GC

saunders havill group
40 YEARS
Saunders Havill Group Pty Ltd ABN 24 144 972 949
Brisbane • Emerald • Gladstone
Head office 9 Thompson St Bowen Hills Q 4006
phone 1800 123 SHG web www.saundershavill.com
surveying • town planning • urban design • environmental management • landscape architecture

DISCLAIMER:
Designs documented on this drawing are the property of Saunders Havill Group Pty Ltd and are not authorised for reproduction or use in whole or part without written permission.

These plans have been prepared for the exclusive use of the client. Saunders Havill Group do not accept responsibility for any use of or reliance upon the contents of these drawings by any third party. Confirm all dimensions on site and clarify any discrepancies prior to construction.**CLIENT:** DAHUA POINTCORP NARANGBA PTY LTD**PROJECT:** Amity Stages 3**DRAWING:** Streetscape Layout Plan - Sheet 2**SCALE:** 1:200@A1
1:400@A3**DATE:** September 18**PROJECT No:** 9329**DRAWING No:** 9329 L 03 D**CHECKED:** GC**DRAWN:** FS

J:\9329 Bunpergery Road (Amity - Stage 3) Narangba (Dahua Pointcorp Narangba Pty Ltd ATF Dahua Pointcorp Narangba Unit Trust)\Working Files\AutocAD\L - Landscape\9329 L 04 Stage 3 Streetscape Planting Plan Sheet 1.dwg



Stage 3 Streetscape Planting Plan - Sheet 1

Scale 1:200 @ A1
1:400 @ A3

9329 BUNPERGARY ROAD - AMITY STAGE 3, Narangba (Pointcorp Narangba Pty Ltd)
STREETSCAPE - PLANT SCHEDULE (ISSUE D - 19.11.2018)

CODE	SPECIES	COMMON NAME	POT SIZE	TOTAL NO	HEIGHT MIN.	SPREAD MIN.	CALIPER MIN	STAKING	ROOT BARRIER
TREES									
ARA cun	ARACAURIA cunninghamii	"Hoop Pine"	45L	4	1800mm	800mm	50mm	Yes	No
CUP ana	CUPANIOPSIS anarcardiodes	"Tuckeroo"	45L	8	1800mm	800mm	50mm	Yes	
ELA eum	ELAEOCARPUS eumundi	"Eumundi Quandong"	100L	5	2400mm, clear trunk 1000mm	1200mm	70mm	Yes	
ELA ret	ELAEOCARPUS reticulatus	"Blueberry Ash"	45L	21	1650mm, 800 Clear Trunk	800mm	50mm	Yes	
WAT flo	WATERHOUSIA floribunda	"Weeping Lillypilly"	100L	7	2400mm, clear trunk 1000mm	1200mm	70mm	Yes	
SHRUBS & FEATURES									
DOR exc	DORYANTHESE excelsa	"Gynea Lilly"	200mm	19	400mm	400mm	NA		
MEL CT	MELALEUCA "Claret Tops"	"Tea Tree Cultivar"	200mm	47	300mm	300mm	20mm		
PHI Xan	PHILODENDRON "Xanadu"	"Xanadu"	200mm	121	300mm	300mm			
SYZ res	SYZYGIVM "Lilly Pilly" Resilient	"Lilly Pilly"	200mm	33	400mm	400mm	20mm		
GROUNDCOVERS									
DIE bic	DIETES bicolor	"Day lilly"	140mm	52	300mm	250mm			
GAZ rig	GAZANIA rigens	"Daybreak"	140mm	330	150mm	150mm			
LIR EG	LIRIOPE Evergreen Giant	"Giant Mondo"	140mm	148	250mm	200mm			

LEGEND: to be read in conjunction with accompanying SHG & MBRC Detail Drawings, Specifications and Schedules that form part of the detailed landscape documentation set.

- PROPOSED TREE LOCATIONS: Refer to Planting Plan & Schedule
- GROUNDCOVER, FEATURE PLANT & SHRUBS: Refer Plan & Schedule
- MULCHED PLANTING AREA: Mulch, Topsoil and Cultivation.
- COIR-MATTED PLANTING AREA: Matting, Topsoil and Cultivation.
- SPADE CUT EDGING: Maintain between grass & planting.
- PCE PLAYGROUND CONCRETE EDGING: Flush edge between Softfall & Planting.
- TURFED AREA: A Grade Green Couch, Topsoil and Cultivation
- BROOM FINISHED CONCRETE: Plain Concrete paths Refer Specifications and Details
- PAVING TYPE 1: Broom Finished Coloured Concrete Refer Specifications and Details
- PAVING TYPE 2: Exposed Aggregate Finished Coloured Refer Specifications and Details
- TIMBER BOLLARDS: 1.5M Centres Typically - Refer to Details
- REMOVABLE BOLLARDS: Refer to Details
- MULCH SOFTFALL: Organic Playground Mulch - Refer Specifications and Details
- RUBBER SOFTFALL: Playground Softfall - Refer Specifications and Details
- LIGHT POLE INDICATIVE LOCATION: Refer Elec. Eng. Confirm tree setbacks a pre-start meeting prior to excavation.

NOTES:
Key service locations are shown where available to assist with site works. For complete details of service information refer to full Engineer's drawing sets and confirm all locations on site prior to excavation. No excavations to take place without approval of the Site Superintendent.
Any proposed adjustments to the landscape plan required based on site conditions and services clashes are to be confirmed with the Landscape Architect prior to construction.




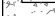
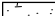
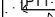
AMENDMENTS:			
Issue	Date	Description	Checked
A	25/07/2018	Client Approval	GC
B	21/09/2018	Council Approval	GC
C	11/10/2018	RFI / TENDER	GC
D	11/10/2018	Council Tender Rev	GC


saunders havill group 40 YEARS 1975-2015
Saunders Havill Group Pty Ltd ABN 24 144 972 949
Brisbane • Emerald • Gladstone
head office 9 Thompson St Bowen Hills Q 4006
phone 1800 123 SHG web: www.saundershavill.com
surveying • town planning • urban design • environmental management • landscape architecture



APPROVED COMPANY ISO 9001 Quality Management Systems
APPROVED COMPANY ISO 14001 Environmental Management Systems
QMS Certified


DISCLAIMER:
Designs documented on this drawing are the property of Saunders Havill Group Pty Ltd and are not authorised for reproduction or use in whole or part without written permission.
These plans have been prepared for the exclusive use of the client. Saunders Havill Group do not accept responsibility for any use of or reliance upon the contents of these drawings by any third party. Confirm all dimensions on site and clarify any discrepancies prior to construction.

CLIENT: DAHUA POINTCORP NARANGBA PTY LTD
PROJECT: Amity Stages 3
DRAWING: Streetscape Planting Plan - Sheet 1
SCALE: 1:200@A1 0 2 4 10m
1:400@A3
DATE: September 18 CHECKED: GC
PROJECT No: 9329 DRAWN: FS
DRAWING No: 9329 L 04 D

- | | |
|---|--|
|  | PLAYGROUND CONCRETE EDGING:
Flush edge between Softfall & Planting. |
|  | TURFED AREA: A Grade Green Couch
Topsoil and Cultivation |
|  | BROOM FINISHED CONCRETE:
Plain Concrete paths.
Refer Specifications and Details |
|  | PAVING TYPE 1:
Broom Finished Coloured Concrete
Refer Specifications and Details |
|  | PAVING TYPE 2:
Exposed Aggregate Finished Coloured
Refer Specifications and Details |
|  | TIMBER BOLLARDS: 1.5M Centres
Typically - Refer to Details |

-  REMOVABLE BOLLARDS:
Refer to Details

- | | |
|---|---|
|  | <p>MULCH SOFTFALL:
Organic Playground Mulch - Refer Specifications and Details</p> |
|  | <p>RUBBER SOFTFALL:
Playground Softfall - Refer Specifications and Details</p> |

-  LIGHT POLE INDICATIVE LOCATION:
Refer Elec. Eng. Confirm tree setbacks ;
pre-start meeting prior to excavation.

NOTES:
Key service locations are shown where available to assist with site works. For complete details of service information refer to full Engineer's drawing sets and confirm all locations on site prior to excavation. No excavations to take place without approval of the Site Superintendent.

Any proposed adjustments to the landscape plan required based on site conditions and services clashes are to be confirmed with the Landscape Architect prior to construction.

AMENDMENTS:			
Issue	Date	Description	Checked
A	25/07/2018	Client Approval	GC
B	21/09/2018	Council Approval	GC
C	11/10/2018	RFI / TENDER	GC
D	22/11/2018	Council Tender Rev	GC



Saunders Havill Group Pty Ltd ABN 24 144 972 949
Brisbane Emerald Gladstone
head office 9 Thompson St Bowen Hills Q 4006
phone 1300 123 5HG web www.saundershavill.com

surveying ■ town planning ■ urban design ■ environmental management ■ landscape architecture



DISCLAIMER:
Designs documented on this drawing are the property of Saunders Havill Group
PTY LTD and are not authorised for reproduction or use in whole or part
without written permission.

These plans have been prepared for the exclusive use of the client. Saunders Havill Group do not accept responsibility for any use of or reliance upon the contents of these drawings by any third party. Confirm all dimensions on site and clarify any discrepancies prior to construction.

CLIENT: DAHUA POINTCORP
NARANGBA PTY LTD

PROJECT: Amity Stages 3

DRAWING:

Streetscape
Planting Plan - Sheet 2

SCALE: 1:200@A1 1:400@A3

DATE: September 18	CHECKED: GC
--------------------	-------------

PROJECT No: 9329	DRAWN: FS
------------------	-----------

DRAWING No.: 9329 L 05 D



landscape architecture

LEGEND: to be read in conjunction with accompanying SHG & MBRC Detail Drawings, Specifications and Schedules that form part of the detailed landscape documentation set.

- PROPOSED TREE LOCATIONS:
Refer to Planting Plan & Schedule
- GROUNDCOVER, FEATURE PLANT & SHRUBS: Refer Plan & Schedule
- MULCHED PLANTING AREA:
Mulch, Topsoil and Cultivation.
- COIR-MATTED PLANTING AREA:
Matting, Topsoil and Cultivation.
- SPADE CUT EDGING:
Maintain between grass & planting.

- PCE PLAYGROUND CONCRETE EDGING:
Flush edge between Softfall & Planting.
- TURFED AREA: A Grade Green Couch,
Topsoil and Cultivation
- BFC BROOM FINISHED CONCRETE:
Plain Concrete paths
Refer Specifications and Details
- PT1 PAVING TYPE 1:
Broom Finished Coloured Concrete
Refer Specifications and Details
- PT2 PAVING TYPE 2:
Exposed Aggregate Finished Coloured
Refer Specifications and Details
- TBL TIMBER BOLLARDS: 1.5M Centres
Typically - Refer to Details

- RB REMOVABLE BOLLARDS:
Refer to Details

- MS MULCH SOFTFALL:
Organic Playground Mulch - Refer
Specifications and Details
- RS RUBBER SOFTFALL:
Playground Softfall - Refer
Specifications and Details

- LPI LIGHT POLE INDICATIVE LOCATION:
Refer Elec. Eng. Confirm tree setbacks &
pre-start meeting prior to excavation.

NOTES:
Key service locations are shown where available to assist with site works. For complete details of service information refer to full Engineer's drawing sets and confirm all locations on site prior to excavation. No excavations to take place without approval of the Site Superintendent.

Any proposed adjustments to the landscape plan required based on site conditions and services clashes are to be confirmed with the Landscape Architect prior to construction.

AMENDMENTS:

Issue	Date	Description	Checked
A	25/07/2018	Client Approval	GC
B	21/09/2018	Council Approval	GC
C	11/10/2018	RFI / TENDER	GC
D	19/11/2018	Council / Tender Rev	GC

saunders havill group
40 YEARS
1978-2018

Saunders Havill Group Pty Ltd ABN 24 144 972 949
Brisbane • Emerald • Gladstone
head office 9 Thompson St Bowen Hills Q 4006
phone 1800 123 SHG web www.saundershavill.com



DISCLAIMER:
Designs documented on this drawing are the property of Saunders Havill Group Pty Ltd and are not authorised for reproduction or use in whole or part without written permission.

These plans have been prepared for the exclusive use of the client. Saunders Havill Group do not accept responsibility for any use of or reliance upon the contents of these drawings by any third party. Confirm all dimensions on site and clarify any discrepancies prior to construction.

CLIENT: DAHUA POINTCORP
NARANGBA PTY LTD

PROJECT: Amity
Stages 3

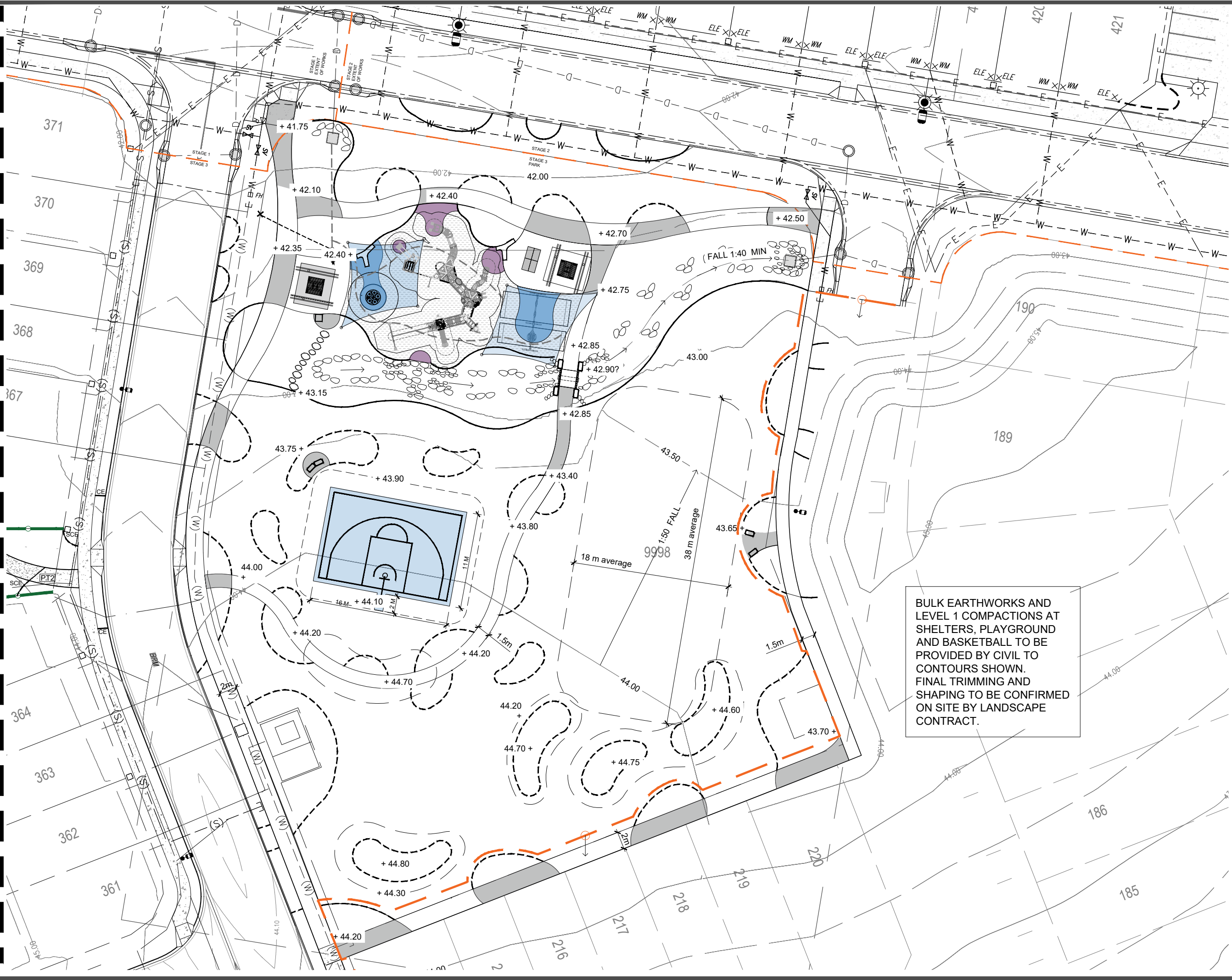
DRAWING: Park
Layout Plan - Sheet 1

SCALE: 1:200@A1
1:400@A3

DATE: November 18 **CHECKED:** GC

PROJECT No: 9329 **DRAWN:** FS

DRAWING No: 9329 L 06 D



BULK EARTHWORKS AND LEVEL 1 COMPACTIONS AT SHELTERS, PLAYGROUND AND BASKETBALL TO BE PROVIDED BY CIVIL TO CONTOURS SHOWN. FINAL TRIMMING AND SHAPING TO BE CONFIRMED ON SITE BY LANDSCAPE CONTRACT.

landscape architecture

LEGEND: to be read in conjunction with accompanying SHG & MBRC Detail Drawings, Specifications and Schedules that form part of the detailed landscape documentation set.

- PROPOSED TREE LOCATIONS:**
Refer to Planting Plan & Schedule
- GROUNDCOVER, FEATURE PLANT & SHRUBS:** Refer Plan & Schedule
- MULCHED PLANTING AREA:**
Mulch, Topsoil and Cultivation.
- COIR-MATTED PLANTING AREA:**
Matting, Topsoil and Cultivation.
- SPADE CUT EDGING:**
Maintain between grass & planting.

- PCE** **PLAYGROUND CONCRETE EDGING:**
Flush edge between Softfall & Planting.
- TURFED AREA:** A Grade Green Couch, Topsoil and Cultivation
- BFC** **BROOM FINISHED CONCRETE:**
Plain Concrete paths
Refer Specifications and Details
- PAVING TYPE 1:**
Broom Finished Coloured Concrete
Refer Specifications and Details
- PAVING TYPE 2:**
Exposed Aggregate Finished Coloured
Refer Specifications and Details
- TIMBER BOLLARDS:** 1.5M Centres
Typically - Refer to Details

- REMOVABLE BOLLARDS:**
Refer to Details

- MULCH SOFTFALL:**
Organic Playground Mulch - Refer Specifications and Details
- RUBBER SOFTFALL:**
Playground Softfall - Refer Specifications and Details
- LIGHT POLE INDICATIVE LOCATION:**
Refer Elec. Eng. Confirm tree setbacks & pre-start meeting prior to excavation.

NOTES:
Key service locations are shown where available to assist with site works. For complete details of service information refer to full Engineer's drawing sets and confirm all locations on site prior to excavation. No excavations to take place without approval of the Site Superintendent.

Any proposed adjustments to the landscape plan required based on site conditions and services clashes are to be confirmed with the Landscape Architect prior to construction.

AMENDMENTS:

Issue	Date	Description	Checked
A	25/07/2018	Client Approval	GC
B	21/09/2018	Council Approval	GC
C	11/10/2018	RFI / TENDER	GC
D	19/11/2018	Council Tender Rev	GC

saunders havill group 40 YEARS 1978-2018

Saunders Havill Group Pty Ltd ABN 24 144 972 949
Brisbane • Emerald • Gladstone
head office 9 Thompson St Bowen Hills Q 4006
phone 1800 123 SHG web www.saundershavill.com
surveying • town planning • urban design • environmental management • landscape architecture

APPROVED COMPANY ISO 9001 Quality Management Systems
APPROVED COMPANY ISO 14001 Environmental Management Systems

DISCLAIMER:
Designs documented on this drawing are the property of Saunders Havill Group PTY LTD and are not authorised for reproduction or use in whole or part without written permission.

These plans have been prepared for the exclusive use of the client. Saunders Havill Group do not accept responsibility for any use of or reliance upon the contents of these drawings by any third party. Confirm all dimensions on site and clarify any discrepancies prior to construction.

CLIENT: DAHUA POINTCORP NARANGBA PTY LTD

PROJECT: Amity Stages 3

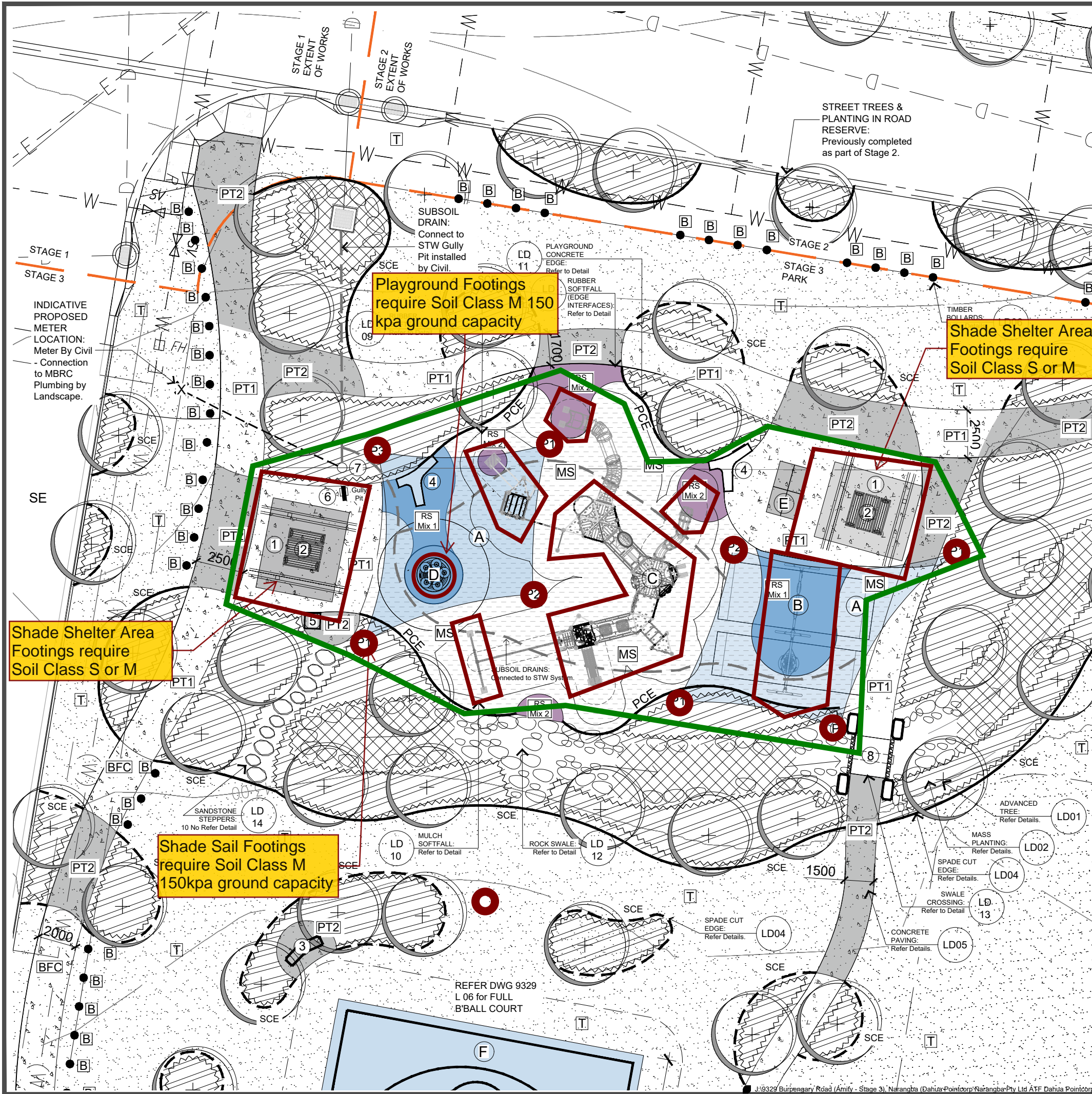
DRAWING: Park Planting Setout And Levels Plan

SCALE: 1:200@A1 1:400@A3

DATE: September 18 **CHECKED:** GC

PROJECT No: 9329 **DRAWN:** FS

DRAWING No: 9329 L 07 D



KEY EMBELLISHMENTS & FURNITURE: REFER LANDSCAPE SPECIFICATION & CONSTRUCTION DETAILS FOR ADDITIONAL INFORMATION

- CANTILEVERED SHADE SHELTER:** "Modified Landmark Designer K905" 4M x 4M Typ. Allow for FORM 15 & 16 structural certificates, any necessary building design approvals and compliance with Australian Standards
- TABLE & BENCHES (No Backs):** "GOSSI - BROADWATER" - Eco Table and Bench Settings, 1860mm long teak brown finished planks with iridium anodised edging & cast corners on powder coated elliptic flange mount legs.
- SANDSTONE BLOCK SEATS:** 500 x 1000 x 450 (Above Ground). Sawn Sandstone Blocks - Refer to SHG Details.
- PRE-CAST CONCRETE BENCH SEATS:** "Street & Garden Furniture TWIG BACKED BENCH - TWIG 1-1" - Glass Reinforced Concrete Body with "Powdercoated Mild Steel Backrest.
- 1 NO. RUBBISH BIN:** "Gossi "Tamora" bin housing (240L) with aluminium "timber look" battens (dark / teak colour).
- DRINKING FOUNTAIN:** DRINKING FOUNTAIN: "Landmark - Foreshore" Universal Access with dog bowl.
- QCV:** Quick coupling valve in waterproof box with lockable lid for Council Maintenance.
- SWALE CROSSING:** Topping Slab and Reinforced concrete pipe at invert - Refer SHG Details.

PLAYGROUND SETTING ITEMS & NOTES: All playgrounds and playground equipment must be designed and constructed in accordance with the most recent edition of all relevant Australian Standards. REFER TO THE LANDSCAPE SPECIFICATION FOR ALL DESCRIPTIONS & REQUIREMENTS

PLAYGROUND FEATURES: Refer Specification

- A) SHADE SAILS:** Supplier URBAN PLAY - Or Similar Approved Supply & install detailed design & construct for over playground items where nominated, inclusive of: shade cloth material. All straining wires to be stainless steel. All fixings to be Stainless Steel.

SAILS: "Rainbow Shade Z16" shade sails Colour "Royale Blue"

POSTS: Powdercoated, "Duratec Monument" hot-dipped galvanised circ. steel posts in locations shown. **All Posts to include Anti-Climbing devices (such as discs) finished to match posts.**

HEIGHTS: Ensure min 2.5m clearance above top of play equipment items at detailed design phase. All Elevations to be confirmed with superintendent as part of Detailed Design and Construct.

Allow for FORM 15 & 16 structural certificates, any necessary building design approvals and compliance with Australian Standards for playground safety to be provided.

PROPOSED POSTS SHADE SAIL POSTS TABLE (To Be Confirmed)
P1 = 6.5M, P2 = 5.5M (2NO.) & P3 = 4.5M
Confirm with Detailed Design & Construct Drawings

- B) "KOMPAK KSW92009 - 2 X BAY HDG SWING SET:** Incorporates Basket swing "Blue" as well as two single swings. Powdercoated steel frame "Anthracite Grey"

- C) "KOMPAK PCM720811 CUSTOM PCM TOWER":** Catering for variety of age groups. Multiple towers and platforms incorporating slide, platforms, overhead rails, etc.

- D) "KOMPAK ELE400060 MULTISPINNER":** Spinner toy.

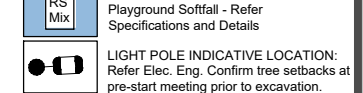
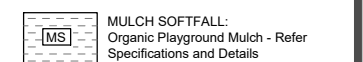
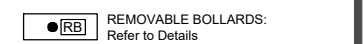
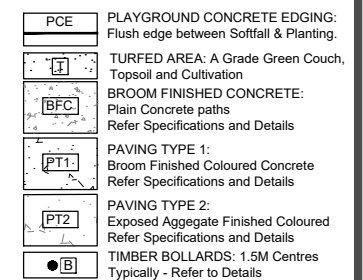
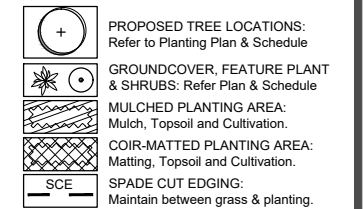
- E) OUTDOOR TABLE TENNIS TABLE - "Flagship POPP" table-2 Pac finished painted mild steel plate with colour, customised artwork, welded bat and ball holder and 4x securing footings**

- F) BASKETBALL HOOP AND COURT:** Hoop to be "Grand Slam Sports Equipment" BB730 with 3200 outreach. Court Details to be in accordance with attached MBRC standard drawings "PN-6670 & PN-6671 - Finish to be Epoxy Resin surface (Blue)"

RUBBER SOFTFALL COLOUR: Refer to Notes this page in relation to requirements for Softfall to meet relevant Australian Standards and Compliance requirements.

RS Mix 1 - CSBR Mid Blue 50% / Dark Blue 50%
RS Mix 2 - CSBR Mid Purple 50% / Dark Purple 50%

LEGEND: to be read in conjunction with accompanying SHG & MBRC Detail Drawings. Specifications and Schedules that form part of the detailed landscape documentation set.



NOTES:
Key service locations are shown where available to assist with site works. For complete details of service information refer to full Engineer's drawing sets and confirm all locations on site prior to excavation. No excavations to take place without approval of the Site Superintendent.

Any proposed adjustments to the landscape plan required based on site conditions and services clashes are to be confirmed with the Landscape Architect prior to construction.

AMENDMENTS:			
Issue	Date	Description	Checked
A	25/07/2018	Client Approval	GC
B	21/09/2018	Council Approval	GC
C	11/10/2018	RFI / TENDER	GC
D	19/11/2018	Council / Tender Rev	GC

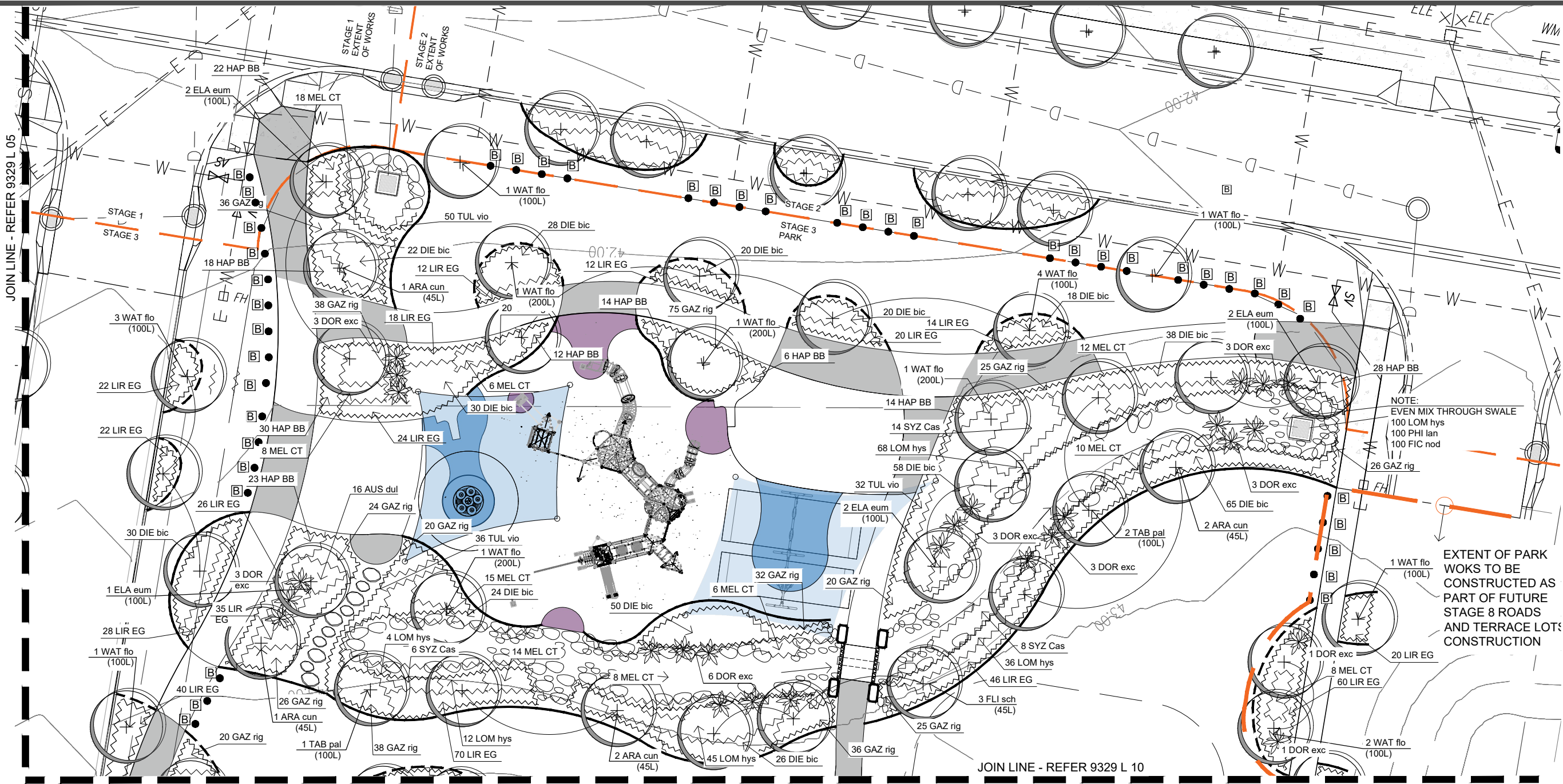
saunders havill group 40 YEARS
Saunders Havill Group Pty Ltd ABN 24 144 972 949
Brisbane • Emerald • Gladstone
head office 9 Thompson St Bowen Hills Q 4006
phone 1800 123 SHG web www.saundershavill.com
surveying • town planning • urban design • environmental management • landscape architecture



DISCLAIMER:
Designs documented on this drawing are the property of Saunders Havill Group Pty Ltd and are not authorised for reproduction or use in whole or part without written permission.

These plans have been prepared for the exclusive use of the client. Saunders Havill Group do not accept responsibility for any use of or reliance upon the contents of these drawings by any third party. Confirm all dimensions on site and clarify any discrepancies prior to construction.

CLIENT:	DAHUA POINTCORP NARANGBA PTY LTD		
PROJECT:	Amity Stage 3		
DRAWING:	Park Detail Plan		
SCALE:	AS NOTED		
DATE:	November 18	CHECKED:	GC
PROJECT No:	9329	DRAWN:	FS
DRAWING No: 9329 L 08 D			



landscape architecture

- LEGEND:** to be read in conjunction with accompanying SHG & MBRC Detail Drawings, Specifications and Schedules that form part of the detailed landscape documentation set.
- PROPOSED TREE LOCATIONS: Refer to Planting Plan & Schedule
 - GROUND COVER, FEATURE PLANT & SHRUBS: Refer Plan & Schedule
 - MULCHED PLANTING AREA: Mulch, Topsoil and Cultivation.
 - COIR-MATTED PLANTING AREA: Matting, Topsoil and Cultivation.
 - SPADE CUT EDGING: Maintain between grass & planting.

- PCE PLAYGROUND CONCRETE EDGING: Flush edge between Softfall & Planting.
- TURFED AREA: A Grade Green Couch, Topsoil and Cultivation
- BFC BROOM FINISHED CONCRETE: Plain Concrete paths Refer Specifications and Details
- PT1 PAVING TYPE 1: Broom Finished Coloured Concrete Refer Specifications and Details
- PT2 PAVING TYPE 2: Exposed Aggregate Finished Coloured Refer Specifications and Details
- TIMBER BOLLARDS: 1.5M Centres Typically - Refer to Details

- REMOVABLE BOLLARDS: Refer to Details

- MS MULCH SOFTFALL: Organic Playground Mulch - Refer Specifications and Details
- RS RUBBER SOFTFALL: Playground Softfall - Refer Specifications and Details
- LIGHT POLE INDICATIVE LOCATION: Refer Elec. Eng. Confirm tree setbacks a pre-start meeting prior to excavation.

NOTES:
Key service locations are shown where available to assist with site works. For complete details of service information refer to full Engineer's drawing sets and confirm all locations on site prior to excavation. No excavations to take place without approval of the Site Superintendent.
Any proposed adjustments to the landscape plan required based on site conditions and services clashes are to be confirmed with the Landscape Architect prior to construction.

AMENDMENTS:			
Issue	Date	Description	Checked
A	25/07/2017	Client Approval	GC
B	21/09/2017	Council Approval	GC
C	11/10/2018	RFI / TENDER	GC
D	19/11/2018	Council / Tender Rev	GC

saunders havill group 40 YEARS
Saunders Havill Group Pty Ltd ABN 24 144 972 949
Brisbane • Emerald • Gladstone
head office 9 Thompson St Bowen Hills Q 4006
phone 1800 123 SHG web: www.saundershavill.com
surveying • town planning • urban design • environmental management • landscape architecture

APPROVED COMPANY
ISO 9001 Quality Management System
APPROVED COMPANY
ISO 14001 Environmental Management System

DISCLAIMER:
Designs documented on this drawing are the property of Saunders Havill Group Pty Ltd and are not authorised for reproduction or use in whole or part without written permission.
These plans have been prepared for the exclusive use of the client. Saunders Havill Group do not accept responsibility for any use of or reliance upon the contents of these drawings by any third party. Confirm all dimensions on site and clarify any discrepancies prior to construction.

CLIENT: DAHUA POINTCORP NARANGBA PTY LTD
PROJECT: Amity Stages 3
DRAWING: Park Planting Plan Sheet 1
SCALE: 0 2.5 5 12.5m
1:250@A3
DATE: November 18 **CHECKED:** GC
PROJECT No: 9329 **DRAWN:** FS
DRAWING No: 9329 L 09 D

9329 BURPENGARY ROAD - AMITY STAGE 3, Narangba (Pointcorp Narangba Pty Ltd)
PARK - PLANT SCHEDULE (ISSUE D - 19.11.2018)

CODE	SPECIES	COMMON NAME	POT SIZE	TOTAL NO	HEIGHT MIN.	SPEED MIN.	CALIPER MIN	STAKING	ROOT BARRIER
					CT = Clear Trunk				
ARA cun	ARACAURIA cunninghamii	"Hoop Pine"	45L	17	1800mm, CT 1000mm	1000mm	40mm	Yes	
BUC cel	BUCKINGHAMIA celsissima	"Ivory Curl Tree"	45L	5	1700mm, CT 1000mm	800mm	40mm	Yes	
PEL pte	PELTOPHORUM pterocarpum	"Yellow Poinciana"	45L	2	1800mm, CT 1000mm	800mm	40mm	Yes	
ELA eum	ELAEOCARPUS eumundi	"Eumundi Quandong"	100L	7	2000mm, CT 1000mm	1000mm	70mm	Yes	
FLI sch	FLINDERSIA schottiana	"Cudgerie"	45L	5	1800mm, CT 1000mm	800mm	40mm	Yes	Yes
SYZ leu	SYZYGIVM leuhamanii	"Riberry"	45L	7	1700mm, CT 1000mm	800mm	40mm	Yes	
TAB pal	TABEBUIA palmerii	"Pink Trumpet Tree"	100L	3	2200mm, CT 1200mm	1000mm	70mm	Yes	
WAT flo	WATERHOUSIA floribunda	"Weeping lillypilly"	100L	19	2200mm, CT 1000mm	1000mm	70mm	Yes	
WAT flo	WATERHOUSIA floribunda	"Weeping lillypilly"	200L	4	3000mm, CT 1000mm	1200mm	100mm	Yes	

SHRUBS & FEATURES									
AUS dul	AUSTROMYRTUS dulais	"Midyim Berry"	140mm	28	300mm	250mm	20mm		
CAL GB	CALLISTEMON "Great Balls c	"Bottlebrush cultivar"	200mm	40	400mm	300mm	20mm		
DOR exc	DORYANTHESE excelsa	"Gymea Lilly"	200mm	32	400mm	400mm	NA		
HEL ita	HELICHRYSUM italicum	"Curry Brush"	140mm	79	300mm	250mm	NA		
MEL CT	MELALEUCA "Claret Tops"	"Tea Tree Cultivar"	200mm	144	300mm	300mm	20mm		
SYZ Cas	SYZYGIVM Cascade	"Pink Flowering Lilly Pilly"	200mm	39	600mm	300mm	20mm		
SYZ res	SYZYGIVM "Lilly Pilly" Resilie	"Lilly Pilly"	200mm	12	600mm	300mm	20mm		
GROUNDCOVERS									
DIE bic	DIETES bicolor	"Day lilly"	140mm	611	300mm	250mm			
FIC nod	FICINIA nodosa	"Clubbrush Sedge"	75mm	100	250mm	150mm			
GAZ rig	GAZANIA rigens	"Daybreak"	140mm	680	150mm	150mm			
HAP BB	HAPPITUNAS "Bubble Gum"	"Bubble Gum Series"	140mm	167	150mm	200mm			
LIR EG	LIRIOPE Evergreen Giant	"Giant Mondo"	140mm	736	250mm	200mm			
LOM hys	LOMANDRA hystrix	Creek mat-rush	75mm	537	250mm	150mm			
MYO ell	MYOPORUM ellipticum	"Boobialla"	140mm	183	100mm	250mm			
PHI lan	PHILYDRUM lanuginosum	"Frogsmouth Sedge"	75	100	250mm	150mm			
TUL vio	TULBAGHIA violacea	"Society Garlic"	140mm	261	200mm	200mm			

JOIN LINE - REFER 9329 L 05

JOIN LINE - REFER 9329 L 09

9998

EXTENT OF PARK
WORKS TO BE
CONSTRUCTED AS
PART OF FUTURE
STAGE 8 ROADS
AND TERRACE LOTS
CONSTRUCTION

LEGEND: to be read in conjunction with accompanying SHG & MBRC Detail Drawings, Specifications and Schedules that form part of the detailed landscape documentation set.

- PROPOSED TREE LOCATIONS: Refer to Planting Plan & Schedule
- GROUND COVER, FEATURE PLANT & SHRUBS: Refer Plan & Schedule
- MULCHED PLANTING AREA: Mulch, Topsoil and Cultivation
- COIR-MATTED PLANTING AREA: Matting, Topsoil and Cultivation
- SPADE CUT EDGING: Maintain between grass & planting

- PCE PLAYGROUND CONCRETE EDGING: Flush edge between Softfall & Planting
- T TURFED AREA: A Grade Green Couch, Topsoil and Cultivation
- BFC BROOM FINISHED CONCRETE: Plain Concrete paths Refer Specifications and Details
- PT1 PAVING TYPE 1: Broom Finished Coloured Concrete Refer Specifications and Details
- PT2 PAVING TYPE 2: Exposed Aggregate Finished Coloured Refer Specifications and Details
- B TIMBER BOLLARDS: 1.5M Centres Typically - Refer to Details

- RB REMOVABLE BOLLARDS: Refer to Details

- MS MULCH SOFTFALL: Organic Playground Mulch - Refer Specifications and Details
- RS RUBBER SOFTFALL: Playground Softfall - Refer Specifications and Details

- Light Pole Indicative Location: Refer Elec. Eng. Confirm tree setbacks a pre-start meeting prior to excavation.

NOTES:
Key service locations are shown where available to assist with site works. For complete details of service information refer to full Engineer's drawing sets and confirm all locations on site prior to excavation. No excavations to take place without approval of the Site Superintendent.

Any proposed adjustments to the landscape plan required based on site conditions and services clashes are to be confirmed with the Landscape Architect prior to construction.

AMENDMENTS:			
Issue	Date	Description	Checked
A	25/07/2017	Client Approval	GC
B	21/09/2017	Council Approval	GC
C	11/10/2018	RFI / TENDER	GC
D	19/11/2018	Council / Tender Rev	GC



Saunders Havill Group Pty Ltd ABN 24 144 972 949
Brisbane • Emerald • Gladstone
head office 9 Thompson St Bowen Hills Q 4006
phone 1800 123 SHG web www.saundershavill.com
surveying • town planning • urban design • environmental management • landscape architecture



DISCLAIMER:
Designs documented on this drawing are the property of Saunders Havill Group Pty Ltd and are not authorised for reproduction or use in whole or part without written permission.
These plans have been prepared for the exclusive use of the client. Saunders Havill Group do not accept responsibility for any use of or reliance upon the contents of these drawings by any third party. Confirm all dimensions on site and clarify any discrepancies prior to construction.

CLIENT: DAHUA POINTCORP
NARANGBA PTY LTD

PROJECT: Amity Stages 3

DRAWING: Park Planting Plan
Sheet 2

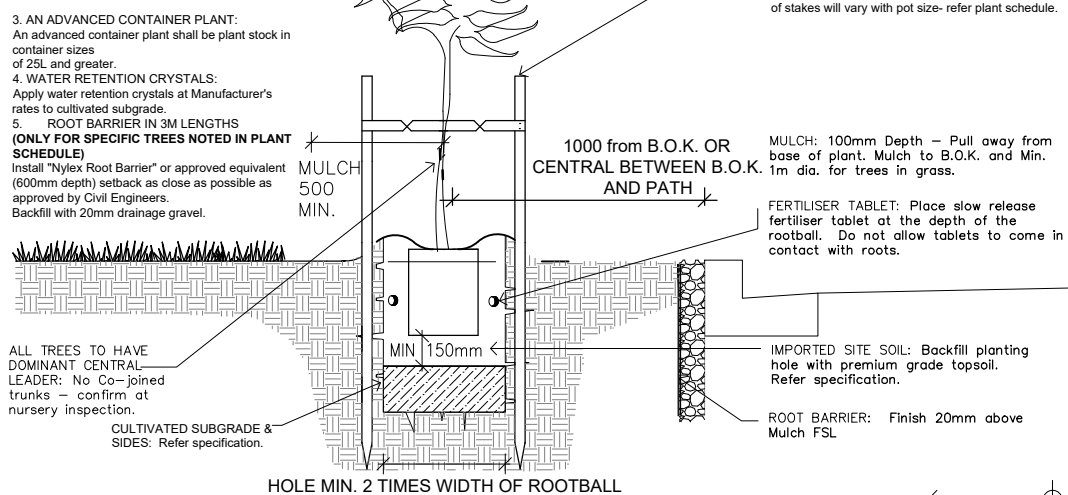
SCALE: 0 2.5 5 12.5m
1:250@A3

DATE: November 18 CHECKED: GC

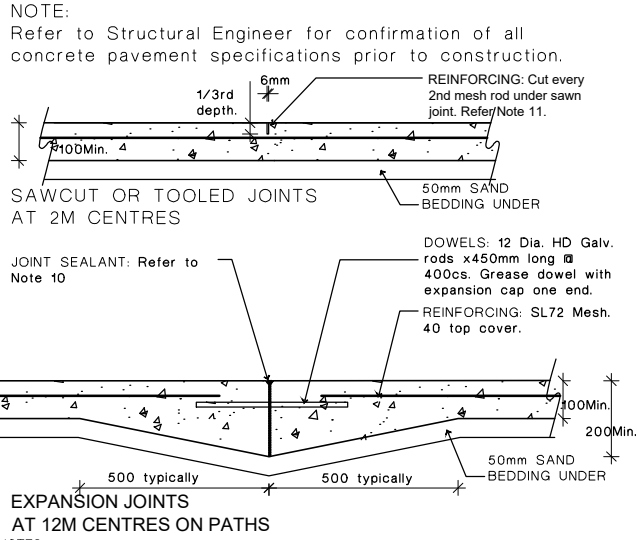
PROJECT No: 9329 DRAWN: FS

DRAWING No: 9329 L 10 D

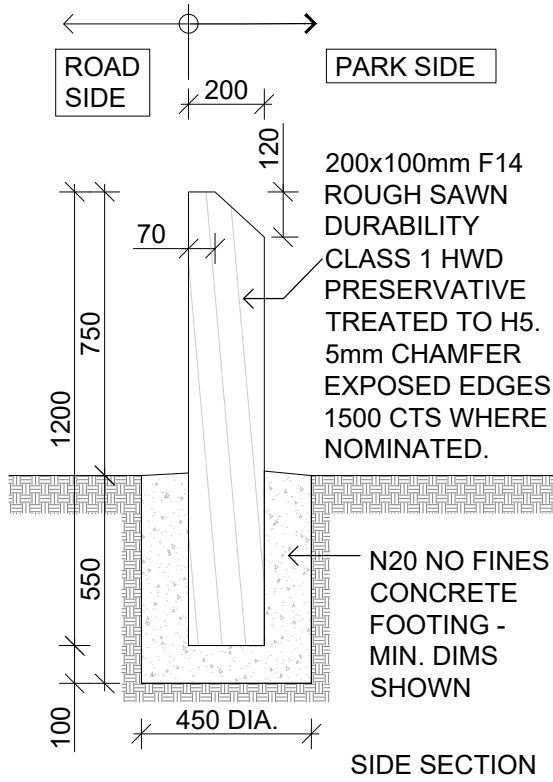
- NOTES:
1. PLANTING HOLE: Dig hole and cultivate subgrade as shown
 2. WATERING
Thoroughly water the root ball of each plant immediately after planting.
PLANT: Refer Plant Schedule and Specification.
 3. AN ADVANCED CONTAINER PLANT:
An advanced container plant shall be plant stock in container sizes of 25L and greater.
 4. WATER RETENTION CRYSTALS:
Apply water retention crystals at Manufacturer's rates to cultivated subgrade.
 5. ROOT BARRIER IN 3M LENGTHS
(ONLY FOR SPECIFIC TREES NOTED IN PLANT SCHEDULE)
Install "Nylax Root Barrier" or approved equivalent (600mm depth) setback as close as possible as approved by Civil Engineers.
Backfill with 20mm drainage gravel.



LD01 ADVANCED TREE DETAIL
Scale 1:20 @ A1
1:40 @ A3



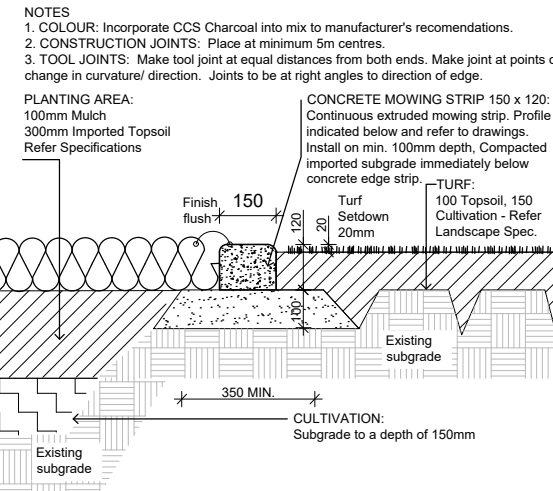
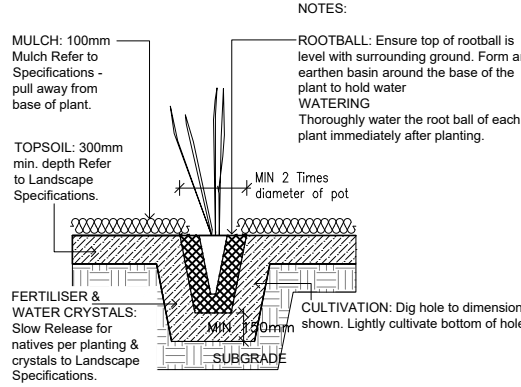
LD05 CONCRETE PAVING DETAIL
Scale 1:10 @ A1 / 1:20 @ A3



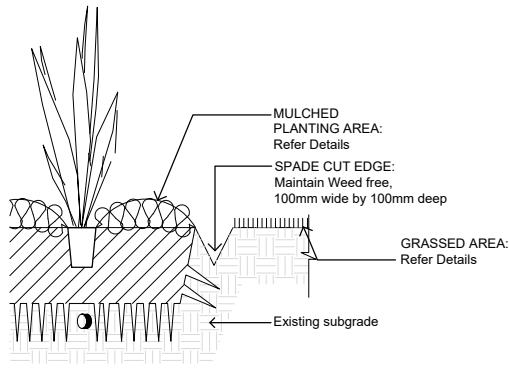
LD06 TIMBER BOLLARDS
Scale 1:10 @ A1 / 1:20 @ A3

- NOTES:
1. Refer to relevant Council requirements for pathway width, dimensions and concrete colour.
 2. Concrete to be grade N32 AS 1379 and AS 3600 unless approved otherwise.
 3. Reinforcing requirements may be amended on written instructions from Council.
 4. Fibre reinforcement — When approved for use by the relevant Council, the concrete shall be reinforced with Class 2 macro structural synthetic polymer fibres in accordance with the manufacturers specification for the specified design load.
 5. For steel mesh reinforced paths at dowelled expansion joints: Mesh is to be stopped 75 from the joint, be placed under the dowels and chaired at min 50 cover from bottom to deter the mesh deflection interfering with the Dowels.
 6. Surface to be non-slip concrete finish to AS 1428.1.
 7. The dimension between kerb invert and edge of pathway may be varied subject to relevant council approval. For appropriate treatment of grades greater than 1 in 8 (12.5%), refer to AS 1428, Design for access & mobility.
 8. Where a vehicle crossing point, or path is subject to longitudinal traffic the pathway details shall be per relevant residential driveway standard details RS-050.
 9. Additional path details shall be as per Austroads Guidelines.
 10. Expansion joints to be sealed with a low modulus self priming sealant to the manufacturers specifications. The colour of the sealant is to match the adjoining surface finish.
 11. Saw cut joints are to be undertaken between 4 to 12 hours after laying depending on conditions. Joint sealant is required in sandy areas.
 12. All dimensions are in millimetres unless shown otherwise.

LD02 MASS PLANTING DETAIL
Scale 1:20 @ A1
1:40 @ A3



LD03 CONCRETE EDGING DETAIL
Scale 1:10 @ A1
1:20 @ A3



LD04 SPADE CUT EDGE DETAIL
Scale 1:10 @ A1
1:20 @ A3

AMENDMENTS:			
Issue	Date	Description	Checked
A	25/07/2018	Client Approval	GC
B	21/08/2018	Council Approval	GC
C	11/10/2018	RFI / TENDER	GC
D	22/11/2018	Council Tender Rev	GC

saunders havill group 40 YEARS

Saunders Havill Group Pty Ltd ABN 24 144 972 949

Brisbane • Emerald • Gladstone

head office 9 Thompson St Bowen Hills Q 4006

phone 1800 123 SHG web www.saundershavill.com

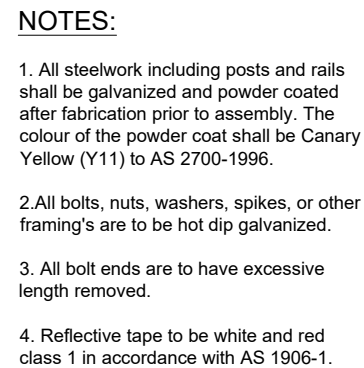
surveying • town planning • urban design • environmental management • landscape architecture

APPROVED COMPANY	APPROVED COMPANY
ISO9001 Quality Management Systems	ISO14001 Environmental Management Systems
QMS Certification	QMS Certification

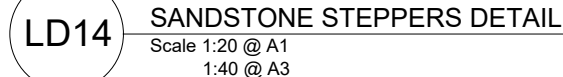
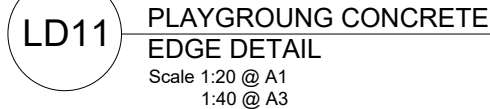
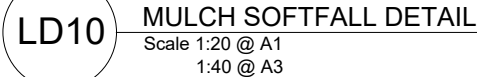
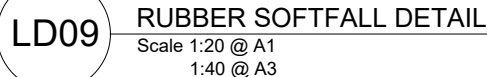
DISCLAIMER:
Designs documented on this drawing are the property of Saunders Havill Group PTY LTD and are not authorised for reproduction or use in whole or part without written permission.

These plans have been prepared for the exclusive use of the client. Saunders Havill Group do not accept responsibility for any use of or reliance upon the contents of these drawings by any third party. Confirm all dimensions on site and clarify any discrepancies prior to construction.

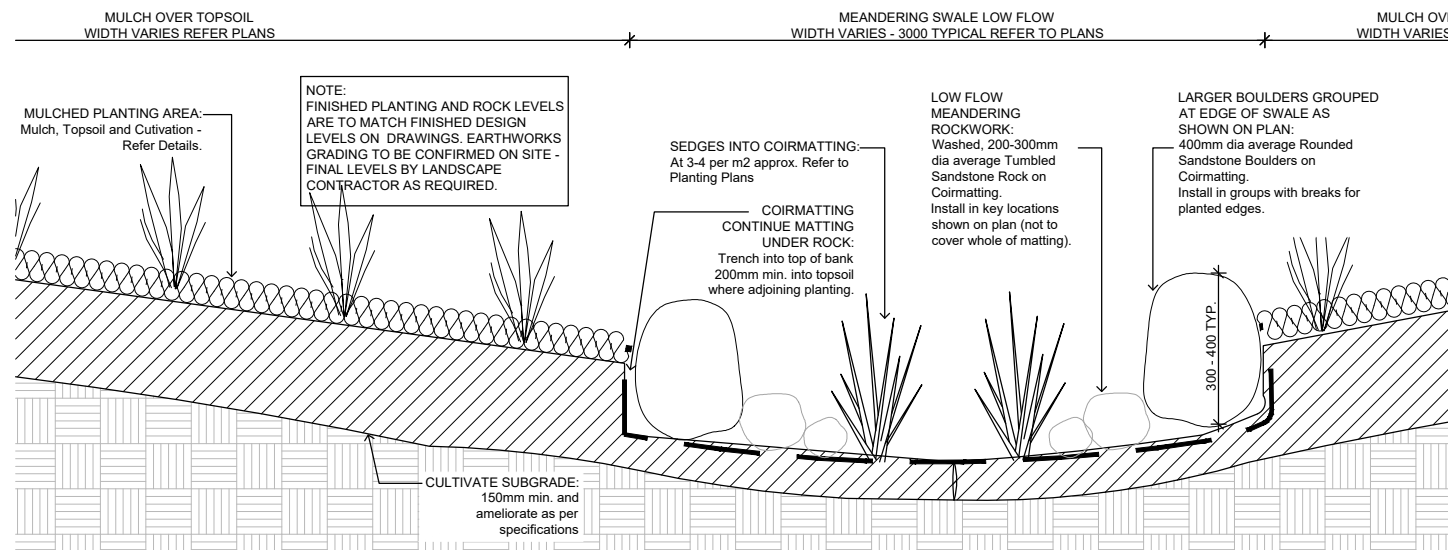
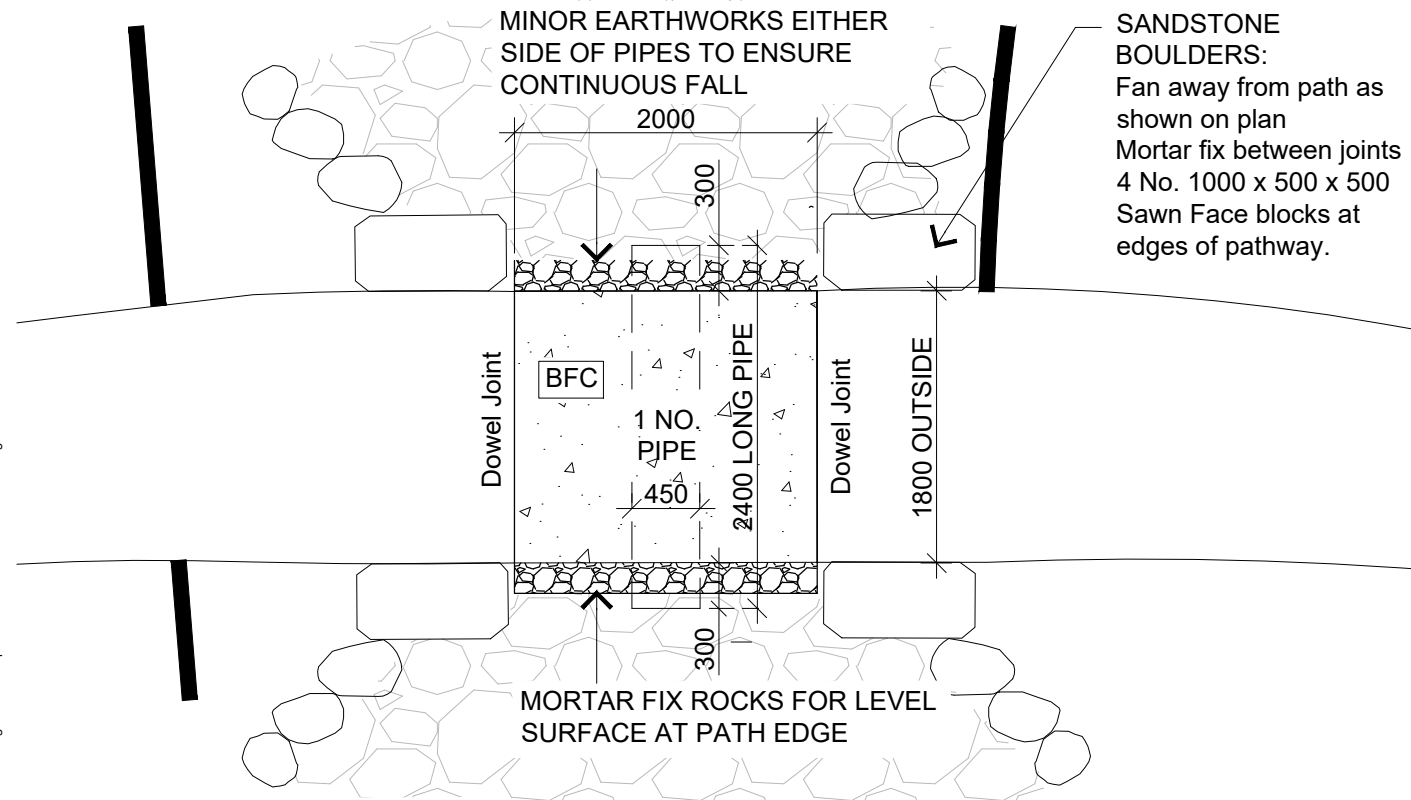
CLIENT:	DAHUA POINTCORP NARANGBA PTY LTD
PROJECT:	Amity Stage 3
DRAWING:	Landscape Construction Detail Sheet 1
SCALE:	AS NOTED
DATE: September 18	CHECKED: GC
PROJECT No: 9329	DRAWN: FS
DRAWING No:	9329 L 11 D



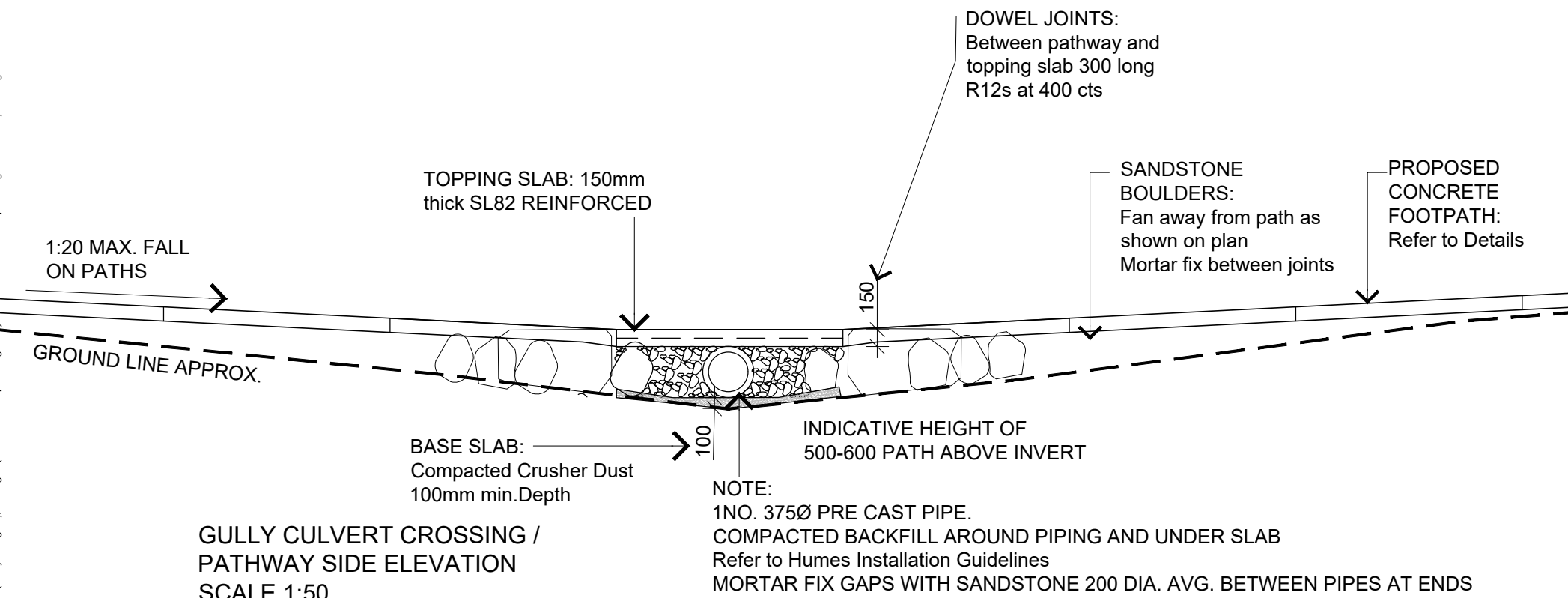
Scale 1:20 @ A1
1:40 @ A3



DRAWING No.: 9329 L 12 D



LD12 ROCK SWALE DETAIL
Scale 1:10 @ A1
1:20 @ A3



LD13 SWALE CROSSING DETAIL
Scale 1:25 @ A1 / 1:50 @ A3

AMENDMENTS:			
Issue	Date	Description	Checked
A	25/07/2018	Client Approval	GC
B	21/09/2018	Council Approval	GC
C	11/10/2018	RFI / TENDER	GC
D	19/11/2018	Council / Tender Rev	GC

saunders havill group 40 YEARS

Saunders Havill Group Pty Ltd ABN 24 144 972 949

Brisbane • Emerald • Gladstone

head office 9 Thompson St Bowen Hills Q 4006

phone 1800 123 SHG web www.saundershavill.com

surveying • town planning • urban design • environmental management • landscape architecture

APPROVED COMPANY	APPROVED COMPANY
ISO 9001 Quality Management Systems	ISO 14001 Environmental Management Systems
QMS	QMS

DISCLAIMER:
Designs documented on this drawing are the property of Saunders Havill Group PTY LTD and are not authorised for reproduction or use in whole or part without written permission.

These plans have been prepared for the exclusive use of the client. Saunders Havill Group do not accept responsibility for any use of or reliance upon the contents of these drawings by any third party. Confirm all dimensions on site and clarify any discrepancies prior to construction.

CLIENT:	DAHUA POINTCORP NARANGBA PTY LTD
PROJECT:	Amity Stage 3
DRAWING:	Landscape Construction Detail Sheet 3

SCALE:	AS NOTED
DATE: September 18	CHECKED: GC
PROJECT No: 9329	DRAWN: FS
DRAWING No: 9329 L 13 D	